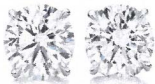


LABORATORY GROWN DIAMOND EVALUATION REPORT



DATE: 23/07/2020
SUMMARY NO: 17J321322007
TOTAL WEIGHT: 1.57 Carat
COLOR: G
CLARITY: SI 1



DESCRIPTION: One 14K White Gold Pair of Earrings, stamped "14 KT, LG", containing Two Laboratory Grown Diamonds

COMMENTS: Grading & Identification of origin as mounting permits. Laserscribe on Girdle : "LABGROWN IGI 17J3213220" Mounting description & image purported by client. This report is for authentication purposes.



INTERNATIONAL GEMOLOGICAL INSTITUTE

1/7 Schupstraat, 2018 Antwerp - Belgium, Tel. +32 3 401 08 88, Fax. +32 3 232 07 58
E-mail: europa@igiworldwide.com - www.igiworldwide.com

Terms & Conditions on IGI website