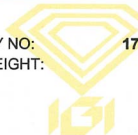


LABORATORY GROWN DIAMOND EVALUATION REPORT



DATE:	23/07/2020
SUMMARY NO:	17J321392007
TOTAL WEIGHT:	0.54 Carat
COLOR:	G
CLARITY:	SI 1



DESCRIPTION: One 14K White Gold Pair of Earrings, stamped "14KT, LG", containing Two Laboratory Grown Diamonds

COMMENTS: Grading & Identification of origin as mounting permits. Laserscribe on Girdle : "LABGROWN IGI 17J3213920" Mounting description & image purported by client. This report is for authentication purposes.



INTERNATIONAL GEMOLOGICAL INSTITUTE

1/7 Schupstraat, 2018 Antwerp - Belgium, Tel. +32 3 401 08 88, Fax. +32 3 232 07 58

E-mail: europa@igiworldwide.com - www.igiworldwide.com

Terms & Conditions on IGI website