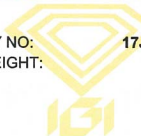


## LABORATORY GROWN DIAMOND EVALUATION REPORT



DATE: **23/07/2020**  
SUMMARY NO: **17J321432007**  
TOTAL WEIGHT: **0.67 Carat**  
COLOR: **G**  
CLARITY: **SI 1**



**DESCRIPTION:** One 14K White Gold Pair of Earrings, stamped "14KT, LG", containing Two Laboratory Grown Diamonds

**COMMENTS:** Grading & Identification of origin as mounting permits. Laserscribe on Girdle : "LABGROWN IGI 17J3214320" Mounting description & image purported by client. This report is for authentication purposes.



**INTERNATIONAL GEMOLOGICAL INSTITUTE**

1/7 Schupstraat, 2018 Antwerp - Belgium, Tel. +32 3 401 08 88, Fax. +32 3 232 07 58  
E-mail: [europa@igiworldwide.com](mailto:europa@igiworldwide.com) - [www.igiworldwide.com](http://www.igiworldwide.com)

*Terms & Conditions on IGI website*