

Identification Data

October 13, 2016

LAB GROWN DIAMOND 
Certificate Number 262710069

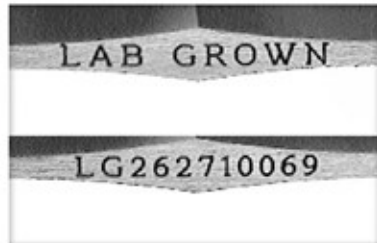
Gemprint

Gemprint is the unique optical fingerprint for positive identification of your lab grown diamond. Register your lab grown diamond at www.Gemprint.com and receive insurance discounts up to 10%.



Laser Inscription:

Actual image of the inscription photographed at magnification greater than 10x
Girdle laser inscribed "LAB GROWN" and "LG262710069"



The 4Cs Grading Analysis

GCAL 262710069

LAB GROWN DIAMOND*

Carat Weight:

0.70

Cut:

Excellent

Shape:

Round Brilliant

Measurements:

5.80-5.83x3.43mm

Polish:

Very Good

External Symmetry:

Very Good

Girdle Thickness:

Thin-Medium

Culet Size:

None

Color:

H

Fluorescence:

None

Clarity:

VVS2

Identifying Characteristic(s): Internal Growth Characteristic/
External Growth Characteristic

Characteristic Location(s): Table,Pavilion/Crown Girdle

Jewelry Description

The lab grown diamond described in this certificate is set in the center of a 14K White Gold Ring. The ring also contains the lab grown diamonds described below:



Shape: (2) Round Brilliant
Total Weight: 0.69 carat
Color Range: H
Clarity Range: VS1

Shape: (6) Round Full Cut
Total Weight: 0.18 carat
Color Range: G-H
Clarity Range: VVS2-VS1

*Comments: These man-made diamonds were grown in a laboratory by the CVD method, and have the same chemical, physical, and optical properties as natural earth mined diamonds.

These lab grown diamonds are classified as Type IIa, which is the most chemically pure type of diamond, and almost or entirely devoid of impurities. Only 1-2% of natural earth mined diamonds are Type IIa, whereas, colorless and near-colorless CVD lab grown diamonds are usually Type IIa.

Light Performance Profile

Photomicrographs:

Actual images of the crown (top) and pavilion (bottom) of this diamond photographed at magnifications up to 10x.



Crown



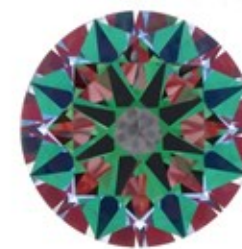
Pavilion

Optical Light Performance:

A direct assessment of a diamond's light handling ability via actual photographs. Brilliance is the overall return of light to the viewer. The brilliance image shows the light return (white areas) and light loss (dark blue areas). The colored pattern of the symmetry image is a visual representation of the facet alignment.



Optical Brilliance
Excellent



Optical Symmetry
Excellent

Proportion Diagram:

The proportion diagram illustrates the actual dimensions as recorded by optical scanning technology.



GCAL
GEM CERTIFICATION & ASSURANCE LAB
INTEGRITY GUARANTEED™



580 Fifth Avenue, New York, NY 10036, T 212.869.8985 F 212.869.2315
www.DiamondID.com, www.GemFacts.com, www.Gemprint.com

© 2016 GCAL

© 2015 Gem Certification & Assurance Lab, Inc. All Rights Reserved