



IGI GEMOLOGICAL REPORT

IGI LABORATORY GROWN DIAMOND GRADING REPORT

11/30/2020
IGI Report Number LG234641389
Shape and Cutting Style ROUND BRILLIANT
Measurements 6.72 - 6.78 X 4.26 MM

GRADING RESULTS

Carat Weight 1.18 CARAT
Color Grade I
Clarity Grade VS 2
Cut Grade EXCELLENT

ADDITIONAL GRADING INFORMATION

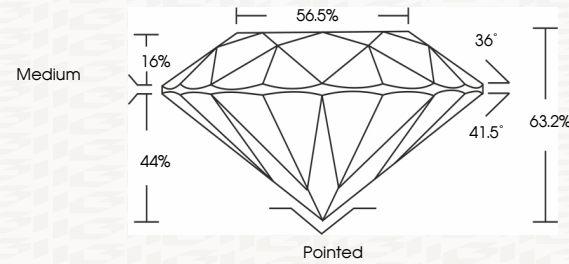
Polish EXCELLENT
Symmetry EXCELLENT
Fluorescence NONE
Inscription(s) LAB GROWN LG 234641389

Comments: This Chemical Vapor Deposition (CVD) laboratory grown diamond is classified as Type IIa

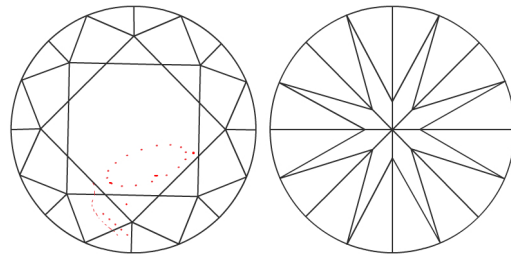


ADDITIONAL INFORMATION

PROPORTIONS



CLARITY CHARACTERISTICS



KEY TO SYMBOLS

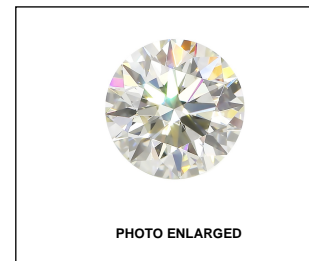
Red symbols indicate internal characteristics.
Green symbols indicate external characteristics.

This Report is subject to the terms and conditions
© IGI 2000, edition 2019 all rights reserved.

GRADING SCALES

Table with 5 columns: CL (Colorless D-F), NC (Near Colorless G-J), FT (Faint K-M), VLT (Very Light N-R), LT (Light S-Z). Rows include Color Grading Scale and Clarity (10x) Grading Scale.

The laboratory grown diamond described in this Report (Report) has been graded, tested, analyzed, examined and/or inscribed by International Gemological Institute (IGI). A laboratory grown diamond is one that has essentially the same chemical, physical and optical properties as a mined diamond, with the exception of being grown by man (a manufactured product)...



LAB GROWN LG 234641389 LASERSCRIBE SM



IGI LABORATORY GROWN DIAMOND GRADING REPORT

11/30/2020
IGI Report Number LG234641389
Shape and Cutting Style ROUND BRILLIANT
Measurements 6.72 - 6.78 X 4.26 MM

GRADING RESULTS

Carat Weight 1.18 CARAT
Color Grade I
Clarity Grade VS 2
Cut Grade EXCELLENT

ADDITIONAL GRADING INFORMATION

Polish EXCELLENT
Symmetry EXCELLENT
Fluorescence NONE
Inscription(s) LAB GROWN LG 234641389

Comments: This Chemical Vapor Deposition (CVD) laboratory grown diamond is classified as Type IIa



IGI

11/30/2020
IGI Report No LG234641389
ROUND BRILLIANT
6.72 - 6.78 X 4.26 MM
Carat Weight 1.18 CARAT
Color Grade I
Clarity Grade VS 2
Cut Grade EXCELLENT
Depth 43.2%
Table 56.5%
Girdle Medium
Culet Pointed
Polish EXCELLENT
Symmetry EXCELLENT
Fluorescence NONE
Inscription(s) LAB GROWN LG 234641389
Comments: This Chemical Vapor Deposition (CVD) laboratory grown diamond is classified as Type IIa