



IGI GEMOLOGICAL REPORT

IGI LABORATORY GROWN DIAMOND GRADING REPORT

07/02/2020

IGI Report Number LG274714719

Shape and Cutting Style SQUARE CUSHION MODIFIED BRILLIANT

Measurements 6.71 X 6.34 X 4.42 MM

GRADING RESULTS

Carat Weight 1.63 CARAT

Color Grade E

Clarity Grade VS 2

ADDITIONAL GRADING INFORMATION

Polish EXCELLENT

Symmetry VERY GOOD

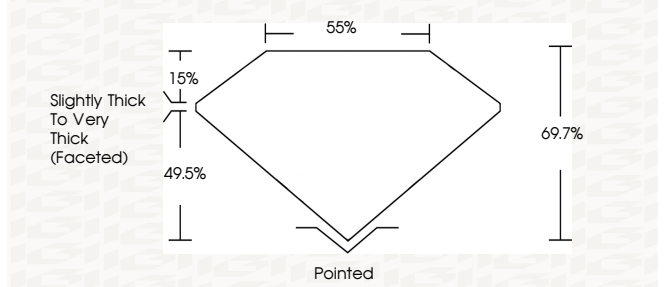
Fluorescence NONE

Inscription(s) LAB GROWN LG 274714719

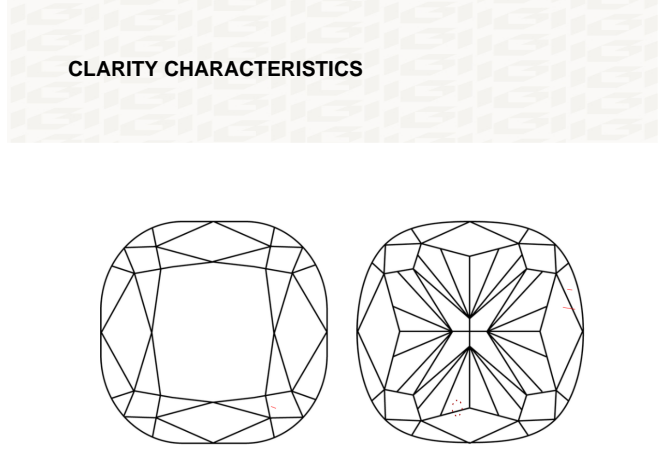
Comments: This Chemical Vapor Deposition (CVD) laboratory grown diamond is classified as Type IIa

ADDITIONAL INFORMATION

PROPORTIONS



CLARITY CHARACTERISTICS



KEY TO SYMBOLS

Red symbols indicate internal characteristics. Green symbols indicate external characteristics.

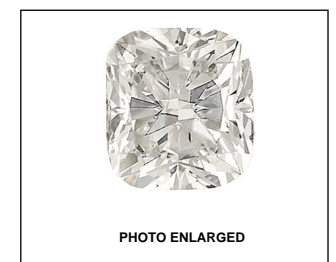
This Report is subject to the terms and conditions

© IGI 2000, edition 2019 all rights reserved.

GRADING SCALES

Table with 5 columns for Color Grading Scale (CL, NC, FT, VLT, LT) and Clarity (10x) Grading Scale (FL, IF, VVS, VS, SI, I).

The laboratory grown diamond described in this Report (Report) has been graded, tested, analyzed, examined and/or inscribed by International Gemological Institute (IGI). A laboratory grown diamond is one that has essentially the same chemical, physical and optical properties as a mined diamond...



LASERSCRIBE SM



IGI LABORATORY GROWN DIAMOND GRADING REPORT

07/02/2020

IGI Report Number LG274714719

Shape and Cutting Style SQUARE CUSHION MODIFIED BRILLIANT

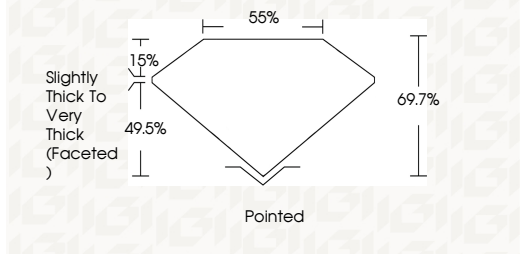
Measurements 6.71 X 6.34 X 4.42 MM

GRADING RESULTS

Carat Weight 1.63 CARAT

Color Grade E

Clarity Grade VS 2



ADDITIONAL GRADING INFORMATION

Polish EXCELLENT

Symmetry VERY GOOD

Fluorescence NONE

Inscription(s) LAB GROWN LG 274714719

Comments: This Chemical Vapor Deposition (CVD) laboratory grown diamond is classified as Type IIa



Summary of report details including Report No. LG274714719, Shape and Cutting Style SQUARE CUSHION MODIFIED BRILLIANT, Measurements 6.71 X 6.34 X 4.42 MM, Carat Weight 1.63 CARAT, Color Grade E, Clarity Grade VS 2, Depth 69.7%, Table 55%, Girdle Slightly Thick To Very Thick, Culet Pointed, Polish EXCELLENT, Symmetry VERY GOOD, Fluorescence NONE, Inscription(s) LAB GROWN LG 274714719, Comments: This Chemical Vapor Deposition (CVD) laboratory grown diamond is classified as Type IIa