



**INTERNATIONAL  
GEMOLOGICAL  
INSTITUTE**

**ELECTRONIC COPY**

**LABORATORY GROWN DIAMOND REPORT**

**LG425080605**

**IGI GEMOLOGICAL REPORT**

**IGI LABORATORY GROWN DIAMOND IDENTIFICATION REPORT**

07/28/2020  
 IGI Report Number LG425080605  
 Shape and Cutting Style PEAR BRILLIANT  
 Measurements 8.52 x 5.64 x 3.48 MM

**GRADING RESULTS**

Carat Weight 0.96 CARAT  
 Color Grade I  
 Clarity Grade VS 2

**ADDITIONAL GRADING INFORMATION**

Polish EXCELLENT  
 Symmetry EXCELLENT  
 Fluorescence NONE  
 Inscription(s) LABGROWN IGI LG425080605

Comments: This Chemical Vapor Deposition (CVD) laboratory grown diamond is classified as Type IIa



This Laboratory Grown Diamond (LGD) described in this Report has been analyzed, graded and Laserscribed® by International Gemological Institute (IGI). A LGD has essentially the chemical, physical and optical properties as a mined diamond, with the exception of being man-made (a manufactured product). LGD's are typically produced by CVD (chemical vapor deposition) or by HPHT (high pressure high temperature) growth processes and may include post growth modifications to change the color. IGI utilizes the most advanced techniques and equipment currently available including, binocular microscopes, diamond color masters, non-contact-optical measuring device, a wide range analytical techniques including FTIR, UV-VIS-NIR, raman spectroscopy, and fluorescence analysis at various excitation wavelengths. This Report includes advanced security features. This Report is neither a guarantee, valuation nor appraisal and by making the report IGI does not agree to purchase or replace the article.

INTERNATIONAL GEMOLOGICAL INSTITUTE, INC

For Terms & Conditions, please visit [www.igi.org](http://www.igi.org)

**ADDITIONAL INFORMATION**

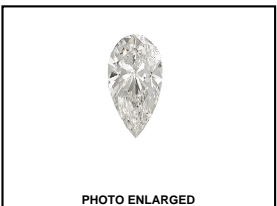
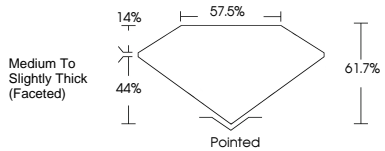


PHOTO ENLARGED



LABGROWN IGI LG425080605

**LASERSCRIBE SM**



THE DOCUMENT WAS PRODUCED THE FOLLOWING SECURITY MEASURES: SPECIAL DOCUMENT PAPER, INK SCREENS, WATERMARK BACKGROUND DESIGNS HOLOGRAM AND OTHER SECURITY FEATURES NOT LISTED AND DO EXCEED DOCUMENT SECURITY INDUSTRY GUIDELINES

**IGI LABORATORY GROWN DIAMOND ID REPORT**

07/28/2020  
 IGI Report Number LG425080605  
**PEAR BRILLIANT**  
**8.52 x 5.64 x 3.48 MM**  
 Carat Weight 0.96 CARAT  
 Color Grade I  
 Clarity Grade VS 2  
 Polish EXCELLENT  
 Symmetry EXCELLENT  
 Fluorescence NONE  
 Inscription(s) LABGROWN IGI LG425080605

Comments: This Chemical Vapor Deposition (CVD) laboratory grown diamond is classified as Type IIa

**IGI LABORATORY GROWN DIAMOND ID REPORT**

07/28/2020  
 IGI Report Number LG425080605  
**PEAR BRILLIANT**  
**8.52 x 5.64 x 3.48 MM**  
 Carat Weight 0.96 CARAT  
 Color Grade I  
 Clarity Grade VS 2  
 Polish EXCELLENT  
 Symmetry EXCELLENT  
 Fluorescence NONE  
 Inscription(s) LABGROWN IGI LG425080605

Comments: This Chemical Vapor Deposition (CVD) laboratory grown diamond is classified as Type IIa