



IGI GEMOLOGICAL REPORT

IGI LABORATORY GROWN DIAMOND GRADING REPORT

12/06/2020
IGI Report Number LG450020053
Shape and Cutting Style ROUND BRILLIANT
Measurements 6.51 - 6.54 X 4.08 MM

GRADING RESULTS

Carat Weight 1.06 CARAT
Color Grade I
Clarity Grade VVS 2
Cut Grade EXCELLENT

ADDITIONAL GRADING INFORMATION

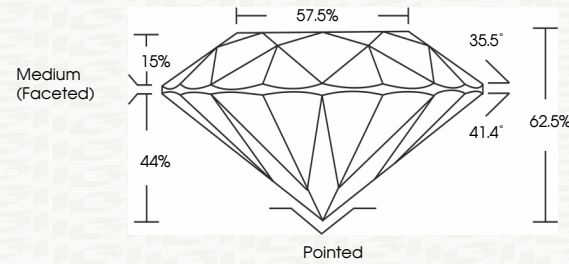
Polish EXCELLENT
Symmetry EXCELLENT
Fluorescence NONE
Inscription(s) LABGROWN IGI LG450020053

Comments: This Chemical Vapor Deposition (CVD) laboratory grown diamond is classified as Type IIa

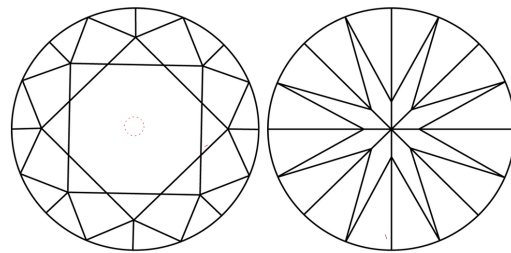


ADDITIONAL INFORMATION

PROPORTIONS



CLARITY CHARACTERISTICS



KEY TO SYMBOLS

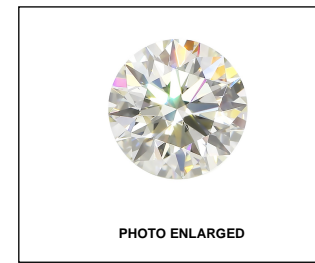
Red symbols indicate internal characteristics.
Green symbols indicate external characteristics.

This Report is subject to the terms and conditions
© IGI 2000, edition 2019 all rights reserved.

GRADING SCALES

Table with 2 rows and 5 columns: COLOR GRADING SCALE (CL, NC, FT, VLT, LT) and CLARITY (10x) GRADING SCALE (FL, IF, VVS, VS, SI, I).

The laboratory grown diamond described in this Report (Report) has been graded, tested, analyzed, examined and/or inscribed by International Gemological Institute (IGI). A laboratory grown diamond is one that has essentially the same chemical, physical and optical properties as a mined diamond, with the exception of being grown by man (a manufactured product).

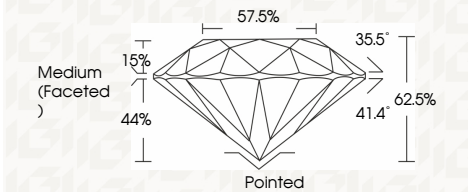


IGI LABORATORY GROWN DIAMOND GRADING REPORT

12/06/2020
IGI Report Number LG450020053
Shape and Cutting Style ROUND BRILLIANT
Measurements 6.51 - 6.54 X 4.08 MM

GRADING RESULTS

Carat Weight 1.06 CARAT
Color Grade I
Clarity Grade VVS 2
Cut Grade EXCELLENT



ADDITIONAL GRADING INFORMATION

Polish EXCELLENT
Symmetry EXCELLENT
Fluorescence NONE
Inscription(s) LABGROWN IGI LG450020053

Comments: This Chemical Vapor Deposition (CVD) laboratory grown diamond is classified as Type IIa



12/06/2020
IGI Report No. LG450020053
ROUND BRILLIANT
6.51 - 6.54 X 4.08 MM
Carat Weight 1.06 CARAT
Color Grade I
Clarity Grade VVS 2
Cut Grade EXCELLENT
Depth 62.5%
Table 57.5%
Girdle Medium (Faceted)
Culet Pointed
Polish EXCELLENT
Symmetry EXCELLENT
Fluorescence NONE
Inscription(s) LABGROWN IGI LG450020053
Comments: This Chemical Vapor Deposition (CVD) laboratory grown diamond is classified as Type IIa