



IGI GEMOLOGICAL REPORT

ADDITIONAL INFORMATION

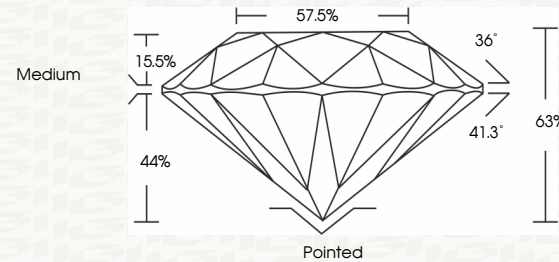
GRADING SCALES

**IGI LABORATORY GROWN DIAMOND GRADING REPORT**

**PROPORTIONS**

COLOR GRADING SCALE	CL	NC	FT	VLT	LT	
	COLORLESS D-F	NEAR COLORLESS G-J	FAINT K-M	VERY LIGHT N-R	LIGHT S-Z	
CLARITY (10x) GRADING SCALE	FL	IF	VVS	VS	SI	I
	FLAWLESS INTERNALLY FLAWLESS	VERY VERY SLIGHTLY INCLUDED	VERY SLIGHTLY INCLUDED	SLIGHTLY INCLUDED		INCLUDED

12/01/2020



The laboratory grown diamond described in this Report ("Report") has been graded, tested, analyzed, examined and/or inscribed by International Gemological Institute (IGI). A laboratory grown diamond is one that has essentially the same chemical, physical and optical properties as a mined diamond, with the exception of being grown by man (a manufactured product). IGI employs and utilizes those techniques and equipment currently available to IGI, including, without limitation, 10X magnification, corrected triplet loupe, binocular microscope, master color comparison stones, non-contact optical measuring device, Diamond Sure™, Diamond View™, Spectrophotometer and such other instruments and/or processes as deemed appropriate by IGI. This Report includes advanced security features. A duly accredited gemologist or jeweler can advise you with respect to the importance of and interrelationship between cut, color, clarity and carat weight.  
**THIS REPORT IS NEITHER A GUARANTEE, VALUATION, NOR APPRAISAL OF THE GEMSTONE DESCRIBED HEREIN. PLEASE REVIEW THE LIMITATIONS AND RESTRICTIONS SET FORTH ONLINE FOR ADDITIONAL INFORMATION, IMPORTANT LIMITATIONS AND DISCLAIMERS, PLEASE GO TO WWW.IGI.ORG OR CALL 1-888-BUY-IGI.**

© INTERNATIONAL GEMOLOGICAL INSTITUTE, INC.

**IGI LABORATORY GROWN DIAMOND GRADING REPORT**

IGI Report Number **LG451068781**

12/01/2020

Shape and Cutting Style **ROUND BRILLIANT**

IGI Report Number **LG451068781**

Measurements **7.62 - 7.64 X 4.80 MM**

Shape and Cutting Style **ROUND BRILLIANT**

**GRADING RESULTS**

Measurements **7.62 - 7.64 X 4.80 MM**

Carat Weight **1.72 CARAT**

**GRADING RESULTS**

Color Grade **J**

Carat Weight **1.72 CARAT**

Clarity Grade **VS 1**

Color Grade **J**

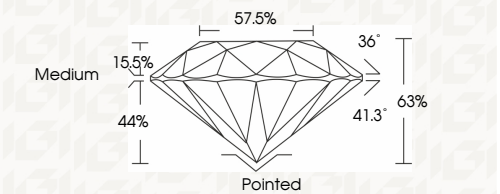
Cut Grade **EXCELLENT**

Clarity Grade **VS 1**

**ADDITIONAL GRADING INFORMATION**

Cut Grade **EXCELLENT**

Polish **VERY GOOD**



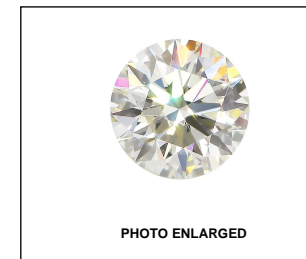
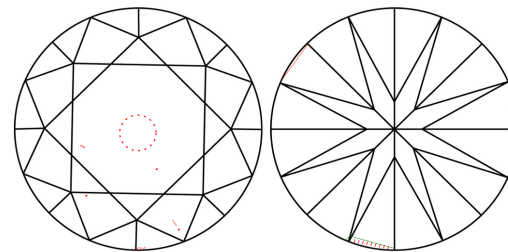
Symmetry **VERY GOOD**

Fluorescence **NONE**

Inscription(s) **LABGROWN IGI LG451068781**

**ADDITIONAL GRADING INFORMATION**

**CLARITY CHARACTERISTICS**



**LASERSCRIBE SM**

Polish **VERY GOOD**

Symmetry **VERY GOOD**

Fluorescence **NONE**

Inscription(s) **LABGROWN IGI LG451068781**

Comments: This Chemical Vapor Deposition (CVD) laboratory grown diamond is classified as Type IIa

Comments: This Chemical Vapor Deposition (CVD) laboratory grown diamond is classified as Type IIa

**KEY TO SYMBOLS**

Red symbols indicate internal characteristics.  
Green symbols indicate external characteristics.



This Report is subject to the terms and conditions

© IGI 2000, edition 2019 all rights reserved.

THE DOCUMENT WAS PRODUCED WITH THE FOLLOWING SECURITY MEASURES: SPECIAL DOCUMENT PAPER, INK SCREENS, WATERMARK BACKGROUND DESIGNS HOLOGRAM AND OTHER SECURITY FEATURES NOT LISTED AND DO EXCEED DOCUMENT SECURITY INDUSTRY GUIDELINES



**IGI**

12/01/2020  
IGI Report No. LG451068781  
**ROUND BRILLIANT**  
7.62 - 7.64 X 4.80 MM  
Carat Weight 1.72 CARAT  
Color Grade J  
Clarity Grade VS 1  
Cut Grade EXCELLENT  
Depth 63%  
Table 57.5%  
Girdle Medium  
Culet Pointed  
Polish VERY GOOD  
Symmetry VERY GOOD  
Fluorescence NONE  
Inscription(s) LABGROWN IGI LG451068781  
Comments: This Chemical Vapor Deposition (CVD) laboratory grown diamond is classified as type IIa