



LG455009894

LABORATORY GROWN DIAMOND REPORT

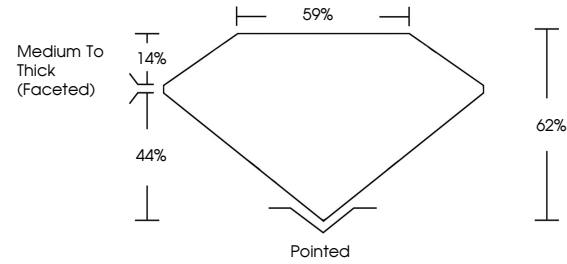
01/05/2021
IGI Report Number LG455009894
Shape and Cutting Style PEAR BRILLIANT
Measurements 10.70 x 6.95 x 4.31 mm

GRADING RESULTS
Carat Weight 1.87 CARAT
Color Grade I
Clarity Grade VS 2

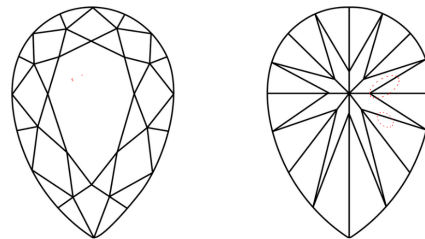
ADDITIONAL GRADING INFORMATION
Polish EXCELLENT
Symmetry EXCELLENT
Fluorescence NONE
Inscription(s) LABGROWN IGI LG455009894

Comments: This Chemical Vapor Deposition (CVD) laboratory grown diamond is classified as Type IIa.

PROPORTIONS



CLARITY CHARACTERISTICS



KEY TO SYMBOLS

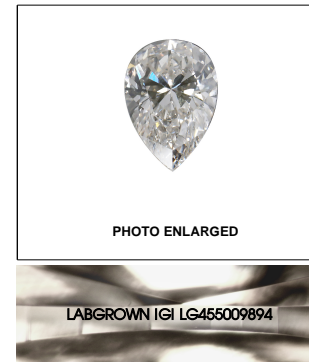
Red symbols indicate internal characteristics.
Green symbols indicate external characteristics.

GRADING SCALES

Table with 5 columns for Color Grading Scale (CL to LT) and Clarity (10x) Grading Scale (FL to I).

The laboratory grown diamond described in this Report (Report) has been graded, tested, analyzed, examined and/or inscribed by International Gemological Institute (IGI). A laboratory grown diamond is one that has essentially the same chemical, physical and optical properties as a mined diamond...

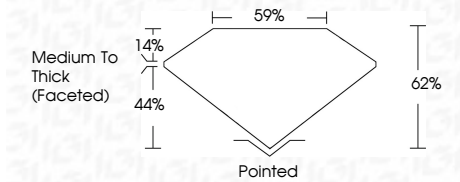
© INTERNATIONAL GEMOLOGICAL INSTITUTE, INC.



LASERSCRIBE SM

01/05/2021
IGI Report Number LG455009894
Shape and Cutting Style PEAR BRILLIANT
Measurements 10.70 x 6.95 x 4.31 mm

GRADING RESULTS
Carat Weight 1.87 CARAT
Color Grade I
Clarity Grade VS 2



ADDITIONAL GRADING INFORMATION
Polish EXCELLENT
Symmetry EXCELLENT
Fluorescence NONE
Inscription(s) LABGROWN IGI LG455009894

Comments: This Chemical Vapor Deposition (CVD) laboratory grown diamond is classified as Type IIa.



IGI

01/05/2021
IGI Report No. LG455009894
PEAR BRILLIANT
10.70 x 6.95 x 4.31 mm
Carat Weight 1.87 CARAT
Color Grade I
Clarity Grade VS 2
Depth 62%
Table 59%
Girdle Medium To Thick (Faceted)
Culet Pointed
Polish EXCELLENT
Symmetry EXCELLENT
Fluorescence NONE
Inscription(s) LABGROWN IGI LG455009894
Comments: This Chemical Vapor Deposition (CVD) laboratory grown diamond is classified as Type IIa.