



LG464195018

LABORATORY GROWN DIAMOND REPORT

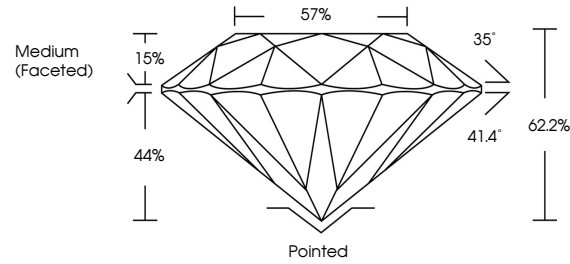
12/27/2020
IGI Report Number LG464195018
Shape and Cutting Style ROUND BRILLIANT
Measurements 6.66 - 6.72 x 4.16 mm

GRADING RESULTS
Carat Weight 1.13 CARAT
Color Grade G
Clarity Grade VS 2
Cut Grade EXCELLENT

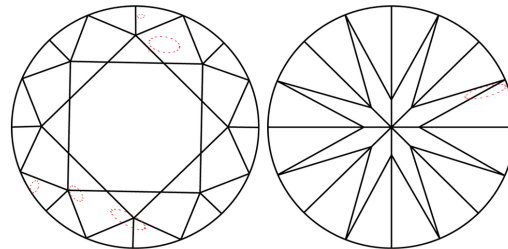
ADDITIONAL GRADING INFORMATION
Polish EXCELLENT
Symmetry EXCELLENT
Fluorescence NONE
Inscription(s) LABGROWN IGI LG464195018

Comments: This Chemical Vapor Deposition (CVD) laboratory grown diamond is classified as Type IIa.

PROPORTIONS



CLARITY CHARACTERISTICS



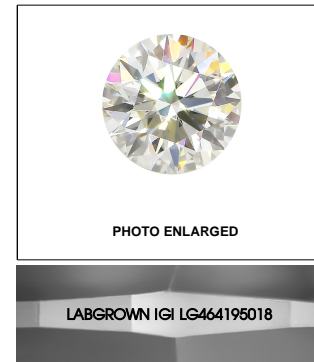
KEY TO SYMBOLS

Red symbols indicate internal characteristics.
Green symbols indicate external characteristics.

GRADING SCALES

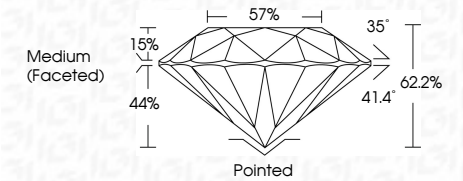
Table with 5 columns for Color Grading Scale (CL, NC, FT, VLT, LT) and Clarity (10x) Grading Scale (FL, IF, VVS, VS, SI, I).

The laboratory grown diamond described in this Report (Report) has been graded, tested, analyzed, examined and/or inscribed by International Gemological Institute (IGI). A laboratory grown diamond is one that has essentially the same chemical, physical and optical properties as a mined diamond...



LASERSCRIBE SM

12/27/2020
IGI Report Number LG464195018
Shape and Cutting Style ROUND BRILLIANT
Measurements 6.66 - 6.72 x 4.16 mm
GRADING RESULTS
Carat Weight 1.13 CARAT
Color Grade G
Clarity Grade VS 2
Cut Grade EXCELLENT



ADDITIONAL GRADING INFORMATION
Polish EXCELLENT
Symmetry EXCELLENT
Fluorescence NONE
Inscription(s) LABGROWN IGI LG464195018

Comments: This Chemical Vapor Deposition (CVD) laboratory grown diamond is classified as Type IIa.



IGI

12/27/2020
IGI Report No LG464195018
ROUND BRILLIANT
6.66 - 6.72 x 4.16 mm
Carat Weight 1.13 CARAT
Color Grade G
Clarity Grade VS 2
Depth 62.2%
Table 57%
Grade Medium (Faceted)
Culet Pointed
Polish EXCELLENT
Symmetry EXCELLENT
Fluorescence NONE
Inscription(s) LABGROWN IGI LG464195018
Comments: This Chemical Vapor Deposition (CVD) laboratory grown diamond is classified as Type IIa.