



LG464196647

LABORATORY GROWN DIAMOND REPORT

12/29/2020
IGI Report Number LG464196647
Shape and Cutting Style ROUND BRILLIANT
Measurements 6.52 - 6.56 x 4.01 mm

GRADING RESULTS

Carat Weight 1.05 CARAT
Color Grade G
Clarity Grade VVS 2
Cut Grade IDEAL

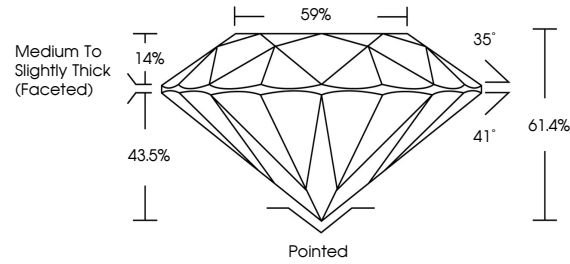
ADDITIONAL GRADING INFORMATION

Polish EXCELLENT
Symmetry EXCELLENT
Fluorescence NONE
Inscription(s) LABGROWN IGI LG464196647

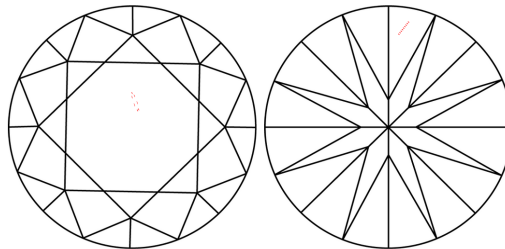
Comments: This Chemical Vapor Deposition (CVD) laboratory grown diamond is classified as Type IIa.



PROPORTIONS



CLARITY CHARACTERISTICS



KEY TO SYMBOLS

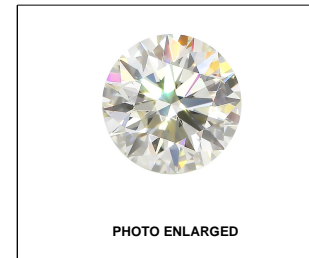
Red symbols indicate internal characteristics.
Green symbols indicate external characteristics.

GRADING SCALES

Table with 5 columns: CL (Colorless D-F), NC (Near Colorless G-J), FT (Faint K-M), VLT (Very Light N-R), LT (Light S-Z). Rows include Color Grading Scale and Clarity (10x) Grading Scale.

The laboratory grown diamond described in this Report (Report) has been graded, tested, analyzed, examined and/or inscribed by International Gemological Institute (IGI). A laboratory grown diamond is one that has essentially the same chemical, physical and optical properties as a mined diamond...

© INTERNATIONAL GEMOLOGICAL INSTITUTE, INC.



LABGROWN IGI LG464196647

LASERSCRIBE SM

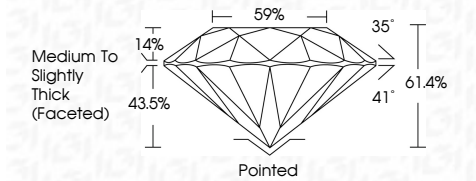


THIS DOCUMENT WAS PRODUCED WITH THE FOLLOWING SECURITY MEASURES: SPECIAL DOCUMENT PAPER, INK SCREENS, WATERMARK BACKGROUND DESIGNS, HOLOGRAM AND OTHER SECURITY FEATURES NOT LISTED AND DO EXCEED DOCUMENT SECURITY INDUSTRY GUIDELINES.

12/29/2020
IGI Report Number LG464196647
Shape and Cutting Style ROUND BRILLIANT
Measurements 6.52 - 6.56 x 4.01 mm

GRADING RESULTS

Carat Weight 1.05 CARAT
Color Grade G
Clarity Grade VVS 2
Cut Grade IDEAL



ADDITIONAL GRADING INFORMATION

Polish EXCELLENT
Symmetry EXCELLENT
Fluorescence NONE
Inscription(s) LABGROWN IGI LG464196647

Comments: This Chemical Vapor Deposition (CVD) laboratory grown diamond is classified as Type IIa.



IGI

12/29/2020
IGI Report No LG464196647
ROUND BRILLIANT
Carat Weight 1.05 CARAT
Color Grade G
Clarity Grade VVS 2
Cut Grade IDEAL
Depth 61.4%
Table 59%
Girdle Medium To Slightly Thick (Faceted)
Culet Pointed
Polish EXCELLENT
Symmetry EXCELLENT
Fluorescence NONE
Inscription(s) LABGROWN IGI LG464196647
Comments: This Chemical Vapor Deposition (CVD) laboratory grown diamond is classified as Type IIa.