



LG464196740

LABORATORY GROWN DIAMOND REPORT

03/14/2021
IGI Report Number LG464196740
Shape and Cutting Style ROUND BRILLIANT
Measurements 6.55 - 6.58 x 4.09 mm

GRADING RESULTS

Carat Weight 1.07 CARAT
Color Grade G
Clarity Grade SI 2
Cut Grade EXCELLENT

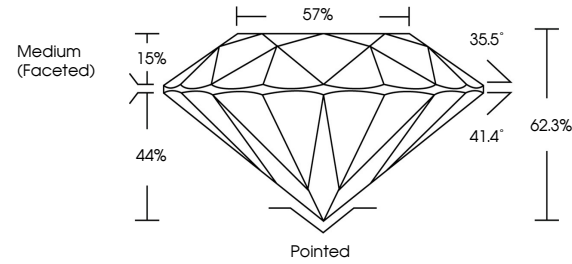
ADDITIONAL GRADING INFORMATION

Polish EXCELLENT
Symmetry EXCELLENT
Fluorescence NONE
Inscription(s) LABGROWN IGI LG464196740

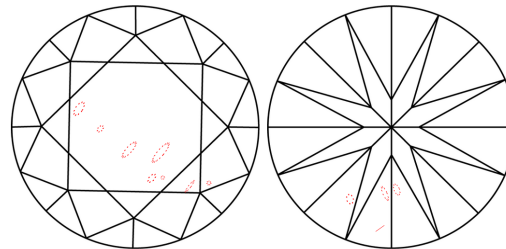
Comments: This Chemical Vapor Deposition (CVD) laboratory grown diamond is classified as Type IIa.



PROPORTIONS



CLARITY CHARACTERISTICS



KEY TO SYMBOLS

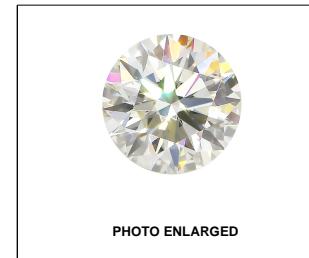
Red symbols indicate internal characteristics.
Green symbols indicate external characteristics.

GRADING SCALES

Table with 5 columns for Color Grading Scale (CL to LT) and Clarity (10x) Grading Scale (FL to I).

The laboratory grown diamond described in this Report (Report) has been graded, tested, analyzed, examined and/or inscribed by International Gemological Institute (IGI). A laboratory grown diamond is one that has essentially the same chemical, physical and optical properties as a mined diamond...

© INTERNATIONAL GEMOLOGICAL INSTITUTE, INC.



LABGROWN IGI LG464196740

LASERSCRIBE SM

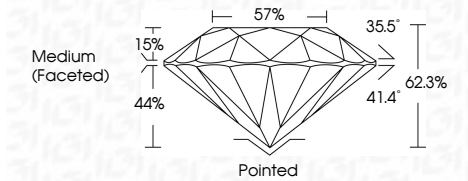


THIS DOCUMENT WAS PRODUCED WITH THE FOLLOWING SECURITY MEASURES: SPECIAL DOCUMENT PAPER, INK SCREENS, WATERMARK BACKGROUND DESIGNS, HOLOGRAM AND OTHER SECURITY FEATURES NOT LISTED AND DO EXCEED DOCUMENT SECURITY INDUSTRY GUIDELINES.

03/14/2021
IGI Report Number LG464196740
Shape and Cutting Style ROUND BRILLIANT
Measurements 6.55 - 6.58 x 4.09 mm

GRADING RESULTS

Carat Weight 1.07 CARAT
Color Grade G
Clarity Grade SI 2
Cut Grade EXCELLENT



ADDITIONAL GRADING INFORMATION

Polish EXCELLENT
Symmetry EXCELLENT
Fluorescence NONE
Inscription(s) LABGROWN IGI LG464196740

Comments: This Chemical Vapor Deposition (CVD) laboratory grown diamond is classified as Type IIa.



IGI

03/14/2021
IGI Report No. LG464196740
ROUND BRILLIANT
Carat Weight 1.07 CARAT
Color Grade G
Clarity Grade SI 2
Depth 62.3%
Table 57%
Girdle Medium (Faceted)
Culet Pointed
Polish EXCELLENT
Symmetry EXCELLENT
Fluorescence NONE
Inscription(s) LABGROWN IGI LG464196740
Comments: This Chemical Vapor Deposition (CVD) laboratory grown diamond is classified as Type IIa.