



LG468173747

LABORATORY GROWN DIAMOND REPORT

12/27/2020
IGI Report Number LG468173747
Shape and Cutting Style ROUND BRILLIANT
Measurements 6.66 - 6.72 x 4.14 mm

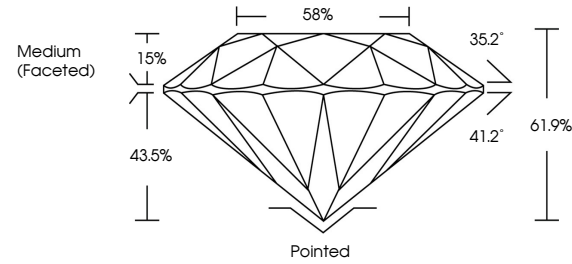
GRADING RESULTS
Carat Weight 1.13 CARAT
Color Grade G
Clarity Grade SI 1
Cut Grade IDEAL

ADDITIONAL GRADING INFORMATION
Polish EXCELLENT
Symmetry EXCELLENT
Fluorescence NONE
Inscription(s) LABGROWN IGI LG468173747

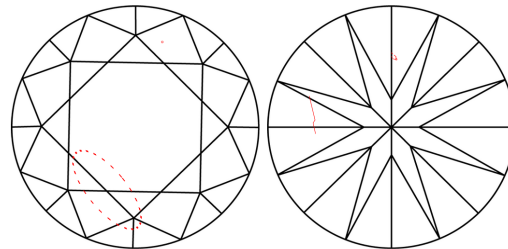
Comments: This Chemical Vapor Deposition (CVD) laboratory grown diamond is classified as Type IIa.



PROPORTIONS



CLARITY CHARACTERISTICS



KEY TO SYMBOLS

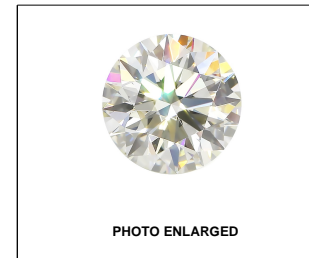
Red symbols indicate internal characteristics.
Green symbols indicate external characteristics.

GRADING SCALES

Table with 5 columns for Color Grading Scale (CL, NC, FT, VLT, LT) and Clarity (10x) Grading Scale (FL, IF, VVS, VS, SI, I).

The laboratory grown diamond described in this Report (Report) has been graded, tested, analyzed, examined and/or inscribed by International Gemological Institute (IGI). A laboratory grown diamond is one that has essentially the same chemical, physical and optical properties as a mined diamond...

© INTERNATIONAL GEMOLOGICAL INSTITUTE, INC.



LABGROWN IGI LG468173747

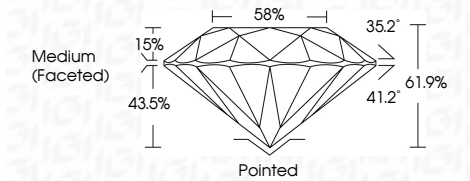
LASERSCRIBE SM



THIS DOCUMENT WAS PRODUCED WITH THE FOLLOWING SECURITY MEASURES: SPECIAL DOCUMENT PAPER, INK SCREENS, WATERMARK BACKGROUND DESIGNS, HOLOGRAM AND OTHER SECURITY FEATURES NOT LISTED AND DO EXCEED DOCUMENT SECURITY INDUSTRY GUIDELINES.

12/27/2020
IGI Report Number LG468173747
Shape and Cutting Style ROUND BRILLIANT
Measurements 6.66 - 6.72 x 4.14 mm

GRADING RESULTS
Carat Weight 1.13 CARAT
Color Grade G
Clarity Grade SI 1
Cut Grade IDEAL



ADDITIONAL GRADING INFORMATION
Polish EXCELLENT
Symmetry EXCELLENT
Fluorescence NONE
Inscription(s) LABGROWN IGI LG468173747

Comments: This Chemical Vapor Deposition (CVD) laboratory grown diamond is classified as Type IIa.



IGI

12/27/2020
IGI Report No. LG468173747
ROUND BRILLIANT
6.66 - 6.72 x 4.14 mm
Carat Weight 1.13 CARAT
Color Grade G
Clarity Grade SI 1
Cut Grade IDEAL
Depth 61.9%
Table 58%
Grade Medium (Faceted)
Culet Pointed
Polish EXCELLENT
Symmetry EXCELLENT
Fluorescence NONE
Inscription(s) LABGROWN IGI LG468173747
Comments: This Chemical Vapor Deposition (CVD) laboratory grown diamond is classified as Type IIa.