



LG468174963

LABORATORY GROWN DIAMOND REPORT

12/27/2020
IGI Report Number LG468174963
Shape and Cutting Style ROUND BRILLIANT
Measurements 6.43 - 6.48 x 4.03 mm

GRADING RESULTS

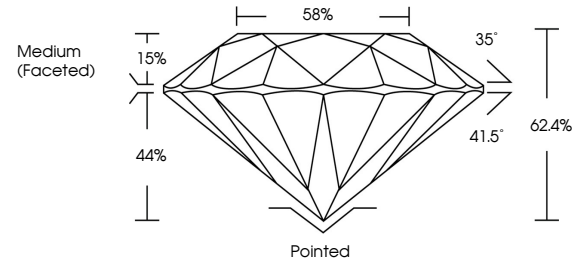
Carat Weight 1.03 CARAT
Color Grade F
Clarity Grade SI 2
Cut Grade EXCELLENT

ADDITIONAL GRADING INFORMATION

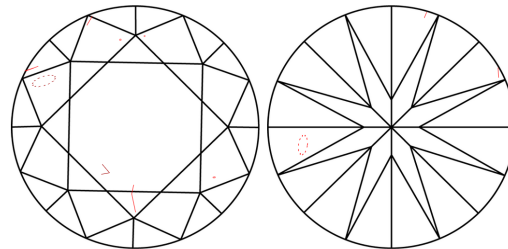
Polish EXCELLENT
Symmetry EXCELLENT
Fluorescence NONE
Inscription(s) LABGROWN IGI LG468174963

Comments: This Chemical Vapor Deposition (CVD) laboratory grown diamond is classified as Type IIa.

PROPORTIONS



CLARITY CHARACTERISTICS



KEY TO SYMBOLS

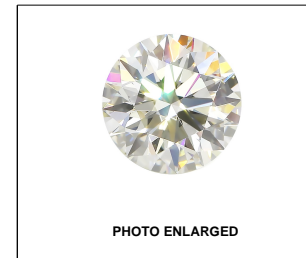
Red symbols indicate internal characteristics.
Green symbols indicate external characteristics.

GRADING SCALES

Table with 5 columns for Color Grading Scale (CL to LT) and Clarity (10x) Grading Scale (FL to I).

The laboratory grown diamond described in this Report (Report) has been graded, tested, analyzed, examined and/or inscribed by International Gemological Institute (IGI). A laboratory grown diamond is one that has essentially the same chemical, physical and optical properties as a mined diamond...

© INTERNATIONAL GEMOLOGICAL INSTITUTE, INC.



LABGROWN IGI LG468174963

LASERSCRIBE SM

12/27/2020
IGI Report Number LG468174963
Shape and Cutting Style ROUND BRILLIANT
Measurements 6.43 - 6.48 x 4.03 mm

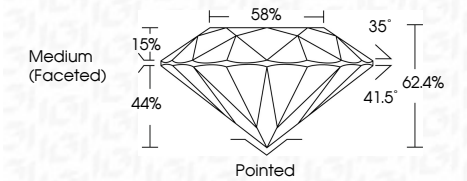
GRADING RESULTS

Carat Weight 1.03 CARAT
Color Grade F
Clarity Grade SI 2
Cut Grade EXCELLENT

ADDITIONAL GRADING INFORMATION

Polish EXCELLENT
Symmetry EXCELLENT
Fluorescence NONE
Inscription(s) LABGROWN IGI LG468174963

Comments: This Chemical Vapor Deposition (CVD) laboratory grown diamond is classified as Type IIa.



IGI

12/27/2020
IGI Report No. LG468174963
ROUND BRILLIANT
Carat Weight 1.03 CARAT
Color Grade F
Clarity Grade SI 2
Depth 62.4%
Table 58%
Grade Medium (Faceted)
Culet Pointed
Polish EXCELLENT
Symmetry EXCELLENT
Fluorescence NONE
Inscription(s) LABGROWN IGI LG468174963
Comments: This Chemical Vapor Deposition (CVD) laboratory grown diamond is classified as Type IIa.