



ELECTRONIC COPY

LABORATORY GROWN DIAMOND REPORT

May 12, 2022
IGI Report Number LG520293620
Description LABORATORY GROWN DIAMOND
Shape and Cutting Style ROUND BRILLIANT
Measurements 6.81 - 6.84 X 4.19 MM

GRADING RESULTS

Carat Weight 1.18 CARAT
Color Grade H
Clarity Grade SI 1
Cut Grade EXCELLENT

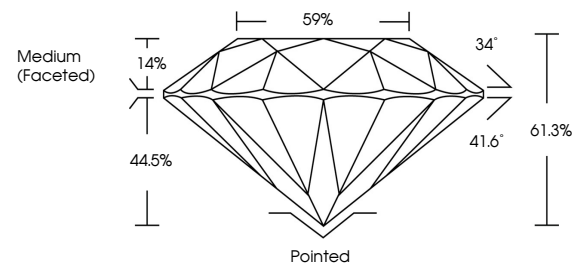
ADDITIONAL GRADING INFORMATION

Polish EXCELLENT
Symmetry EXCELLENT
Fluorescence NONE
Inscription(s) LABGROWN IGI LG520293620

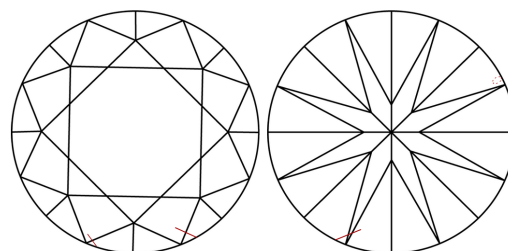
Comments: This Laboratory Grown Diamond was created by Chemical Vapor Deposition (CVD) growth process and may include post-growth treatment. Type IIa

LG520293620

PROPORTIONS



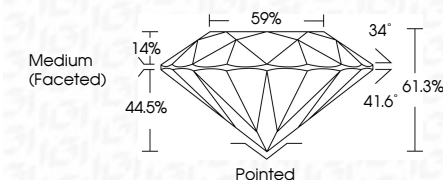
CLARITY CHARACTERISTICS



KEY TO SYMBOLS

Red symbols indicate internal characteristics.
Green symbols indicate external characteristics.

May 12, 2022
IGI Report Number LG520293620
Description LABORATORY GROWN DIAMOND
Shape and Cutting Style ROUND BRILLIANT
Measurements 6.81 - 6.84 X 4.19 MM
GRADING RESULTS
Carat Weight 1.18 CARAT
Color Grade H
Clarity Grade SI 1
Cut Grade EXCELLENT



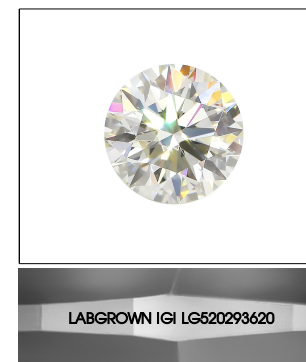
ADDITIONAL GRADING INFORMATION

Polish EXCELLENT
Symmetry EXCELLENT
Fluorescence NONE
Inscription(s) LABGROWN IGI LG520293620

Comments: This Laboratory Grown Diamond was created by Chemical Vapor Deposition (CVD) growth process and may include post-growth treatment. Type IIa

GRADING SCALES

Table with 2 rows: COLOR GRADING SCALE (CL, NC, FT, VLT, LT) and CLARITY (10x) GRADING SCALE (FL, IF, VVS, VS, SI, I) with corresponding descriptions.



LABGROWN IGI LG520293620

LASERSCRIBE SM

Sample Image Used



IGI

May 12, 2022
IGI Report No. LG520293620
ROUND BRILLIANT
6.81 - 6.84 X 4.19 MM
Carat Weight 1.18 CARAT
Color Grade H
Clarity Grade SI 1
Cut Grade EXCELLENT
Depth 61.3%
Table 59%
Girdle Medium (Faceted)
Culet Pointed
Polish EXCELLENT
Symmetry EXCELLENT
Fluorescence NONE
Inscription(s) LABGROWN IGI LG520293620
Comments: This Laboratory Grown Diamond was created by Chemical Vapor Deposition (CVD) growth process and may include post-growth treatment. Type IIa