



ELECTRONIC COPY

LABORATORY GROWN DIAMOND REPORT

April 5, 2022
 IGI Report Number **LG520295608**
 Description **LABORATORY GROWN
DIAMOND**
 Shape and Cutting Style **ROUND BRILLIANT**
 Measurements **7.79 - 7.87 X 4.73 MM**

GRADING RESULTS

Carat Weight **1.76 CARAT**
 Color Grade **F**
 Clarity Grade **SI 2**
 Cut Grade **IDEAL**

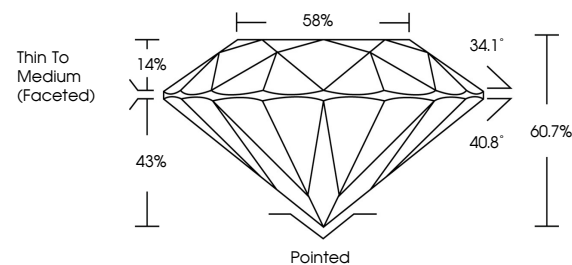
ADDITIONAL GRADING INFORMATION

Polish **EXCELLENT**
 Symmetry **EXCELLENT**
 Fluorescence **NONE**
 Inscription(s) **LABGROWN IGI LG520295608**

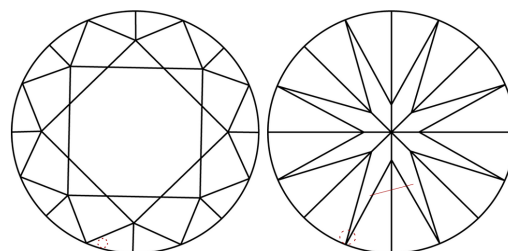
Comments: HEARTS & ARROWS
 Hearts and Arrows pattern viewable with H&A scope.
 This Laboratory Grown Diamond was created by
 Chemical Vapor Deposition (CVD) growth process and
 may include post-growth treatment.
 Type IIa

LG520295608

PROPORTIONS

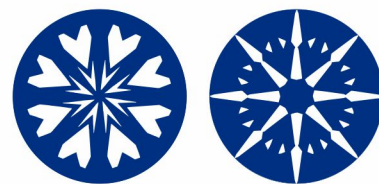


CLARITY CHARACTERISTICS



KEY TO SYMBOLS

Red symbols indicate internal characteristics.
 Green symbols indicate external characteristics.

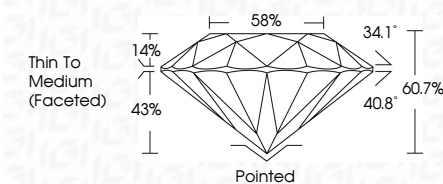


www.igi.org

GRADING SCALES

COLOR GRADING SCALE	CL	NC	FT	VL	LT	
	COLORLESS D-F	NEAR COLORLESS G-J	FAINT K-M	VERY LIGHT N-R	LIGHT S-Z	
CLARITY (10x) GRADING SCALE	FL	IF	VVS	VS	SI	I
	FLAWLESS INTERNALLY FLAWLESS	VERY VERY SLIGHTLY INCLUDED	VERY SLIGHTLY INCLUDED	SLIGHTLY INCLUDED	INCLUDED	

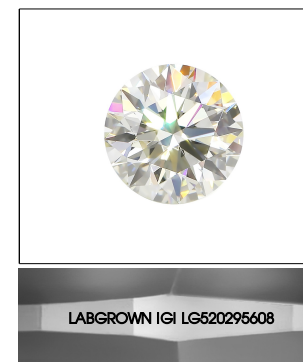
April 5, 2022
 IGI Report Number **LG520295608**
 Description **LABORATORY GROWN
DIAMOND**
 Shape and Cutting Style **ROUND BRILLIANT**
 Measurements **7.79 - 7.87 X 4.73 MM**
GRADING RESULTS
 Carat Weight **1.76 CARAT**
 Color Grade **F**
 Clarity Grade **SI 2**
 Cut Grade **IDEAL**



ADDITIONAL GRADING INFORMATION

Polish **EXCELLENT**
 Symmetry **EXCELLENT**
 Fluorescence **NONE**
 Inscription(s) **LABGROWN IGI LG520295608**

Comments: HEARTS & ARROWS
 Hearts and Arrows pattern viewable with H&A scope.
 This Laboratory Grown Diamond was created by
 Chemical Vapor Deposition (CVD) growth process and
 may include post-growth treatment.
 Type IIa



LASERSCRIBESM

Sample Image Used



IGI

April 5, 2022
 IGI Report No. **LG520295608**
ROUND BRILLIANT
 7.79 - 7.87 X 4.73 MM
 Carat Weight **1.76 CARAT**
 Color Grade **F**
 Clarity Grade **SI 2**
 Cut Grade **IDEAL**
 Depth **60.7%**
 Table **58%**
 Girdle **Thin To Medium (Faceted)**
 Culet **Pointed**
 Polish **EXCELLENT**
 Symmetry **EXCELLENT**
 Fluorescence **NONE**
 Inscription(s) **LABGROWN IGI LG520295608**
Comments: HEARTS & ARROWS
 Hearts and Arrows pattern viewable with H&A scope.
 This Laboratory Grown Diamond was created by Chemical Vapor Deposition (CVD) growth process and may include post-growth treatment.
 Type IIa