



**ELECTRONIC COPY**

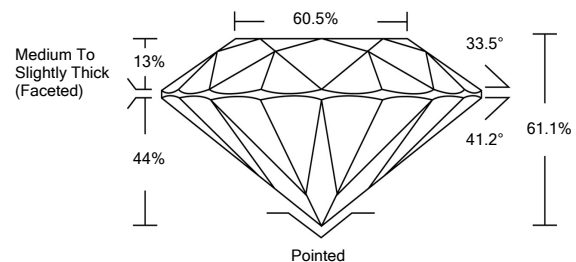
LG523265209

**LABORATORY GROWN DIAMOND REPORT**

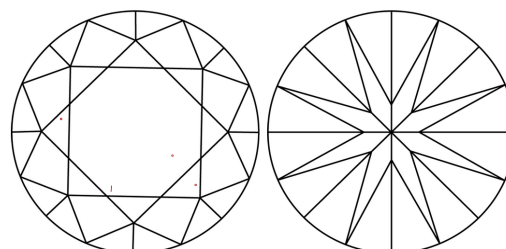
**GRADING SCALES**

|                             |                              |                             |                        |                   |           |   |
|-----------------------------|------------------------------|-----------------------------|------------------------|-------------------|-----------|---|
| COLOR GRADING SCALE         | CL                           | NC                          | FT                     | VL                | LT        |   |
|                             | COLORLESS D-F                | NEAR COLORLESS G-J          | FAINT K-M              | VERY LIGHT N-R    | LIGHT S-Z |   |
| CLARITY (10x) GRADING SCALE | FL                           | IF                          | VVS                    | VS                | SI        | I |
|                             | FLAWLESS INTERNALLY FLAWLESS | VERY VERY SLIGHTLY INCLUDED | VERY SLIGHTLY INCLUDED | SLIGHTLY INCLUDED | INCLUDED  |   |

**PROPORTIONS**

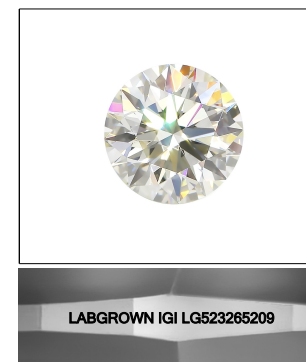


**CLARITY CHARACTERISTICS**



**KEY TO SYMBOLS**

Red symbols indicate internal characteristics.  
Green symbols indicate external characteristics.



LASERSCRIBE<sup>SM</sup>

Sample Image Used

April 7, 2022

IGI Report Number **LG523265209**

Description **LABORATORY GROWN DIAMOND**

Shape and Cutting Style **ROUND BRILLIANT**

Measurements **7.62 - 7.69 X 4.67 MM**

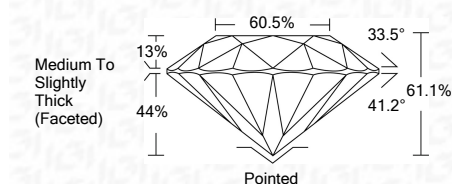
**GRADING RESULTS**

Carat Weight **1.69 CARAT**

Color Grade **F**

Clarity Grade **VS 1**

Cut Grade **EXCELLENT**



**ADDITIONAL GRADING INFORMATION**

Polish **EXCELLENT**

Symmetry **EXCELLENT**

Fluorescence **NONE**

Inscription(s) **LABGROWN IGI LG523265209**

Comments: This Laboratory Grown Diamond was created by Chemical Vapor Deposition (CVD) growth process and may include post-growth treatment.  
Type IIa

April 7, 2022

IGI Report Number **LG523265209**

Description **LABORATORY GROWN DIAMOND**

Shape and Cutting Style **ROUND BRILLIANT**

Measurements **7.62 - 7.69 X 4.67 MM**

**GRADING RESULTS**

Carat Weight **1.69 CARAT**

Color Grade **F**

Clarity Grade **VS 1**

Cut Grade **EXCELLENT**

**ADDITIONAL GRADING INFORMATION**

Polish **EXCELLENT**

Symmetry **EXCELLENT**

Fluorescence **NONE**

Inscription(s) **LABGROWN IGI LG523265209**

Comments: This Laboratory Grown Diamond was created by Chemical Vapor Deposition (CVD) growth process and may include post-growth treatment.  
Type IIa



**IGI**



|                            |                       |               |           |           |           |                                    |           |           |           |              |                          |
|----------------------------|-----------------------|---------------|-----------|-----------|-----------|------------------------------------|-----------|-----------|-----------|--------------|--------------------------|
| IGI Report No. LG523265209 | 1.69 CARAT            | F             | VS 1      | 61.1%     | 60.5%     | Medium To Slightly Thick (Faceted) | Pointed   | EXCELLENT | EXCELLENT | NONE         | LABGROWN IGI LG523265209 |
| ROUND BRILLIANT            | 7.62 - 7.69 X 4.67 MM | EXCELLENT     | EXCELLENT | EXCELLENT | EXCELLENT | EXCELLENT                          | EXCELLENT | EXCELLENT | EXCELLENT | EXCELLENT    | LABGROWN IGI LG523265209 |
| Carat Weight               | Color Grade           | Clarity Grade | Cut Grade | Depth     | Table     | Girdle                             | Culet     | Polish    | Symmetry  | Fluorescence | Inscription(s)           |

Comments: This Laboratory Grown Diamond was created by Chemical Vapor Deposition (CVD) growth process and may include post-growth treatment.  
Type IIa

