



**ELECTRONIC COPY**

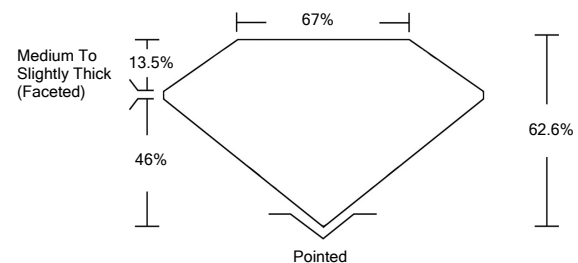
**LABORATORY GROWN DIAMOND REPORT**

|                                       |                                     |
|---------------------------------------|-------------------------------------|
| April 11, 2022                        |                                     |
| IGI Report Number                     | <b>LG523272231</b>                  |
| Description                           | <b>LABORATORY GROWN<br/>DIAMOND</b> |
| Shape and Cutting Style               | <b>SQUARE CUSHION BRILLIANT</b>     |
| Measurements                          | <b>7.58 X 7.54 X 4.72 MM</b>        |
| <b>GRADING RESULTS</b>                |                                     |
| Carat Weight                          | <b>2.10 CARATS</b>                  |
| Color Grade                           | <b>E</b>                            |
| Clarity Grade                         | <b>VS 1</b>                         |
| <b>ADDITIONAL GRADING INFORMATION</b> |                                     |
| Polish                                | <b>EXCELLENT</b>                    |
| Symmetry                              | <b>EXCELLENT</b>                    |
| Fluorescence                          | <b>NONE</b>                         |
| Inscription(s)                        | <b>LABGROWN IGI LG523272231</b>     |

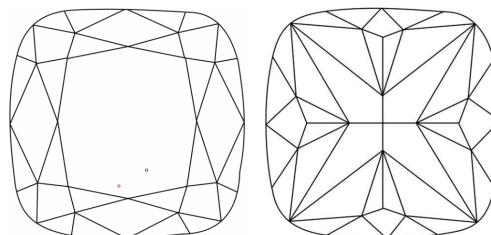
Comments: This Laboratory Grown Diamond was created by Chemical Vapor Deposition (CVD) growth process and may include post-growth treatment.  
Type IIa

LG523272231

**PROPORTIONS**



**CLARITY CHARACTERISTICS**

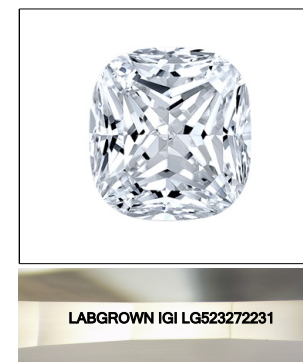


**KEY TO SYMBOLS**

Red symbols indicate internal characteristics.  
Green symbols indicate external characteristics.

**GRADING SCALES**

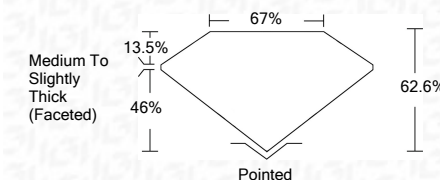
|                             |                              |                             |                        |                   |           |   |
|-----------------------------|------------------------------|-----------------------------|------------------------|-------------------|-----------|---|
| COLOR GRADING SCALE         | CL                           | NC                          | FT                     | VL                | LT        |   |
|                             | COLORLESS D-F                | NEAR COLORLESS G-J          | FAINT K-M              | VERY LIGHT N-R    | LIGHT S-Z |   |
| CLARITY (10x) GRADING SCALE | FL                           | IF                          | VVS                    | VS                | SI        | I |
|                             | FLAWLESS INTERNALLY FLAWLESS | VERY VERY SLIGHTLY INCLUDED | VERY SLIGHTLY INCLUDED | SLIGHTLY INCLUDED | INCLUDED  |   |



**LASERSCRIBE<sup>SM</sup>**

Sample Image Used

|                         |                                     |
|-------------------------|-------------------------------------|
| April 11, 2022          |                                     |
| IGI Report Number       | <b>LG523272231</b>                  |
| Description             | <b>LABORATORY GROWN<br/>DIAMOND</b> |
| Shape and Cutting Style | <b>SQUARE CUSHION<br/>BRILLIANT</b> |
| Measurements            | <b>7.58 X 7.54 X 4.72 MM</b>        |
| <b>GRADING RESULTS</b>  |                                     |
| Carat Weight            | <b>2.10 CARATS</b>                  |
| Color Grade             | <b>E</b>                            |
| Clarity Grade           | <b>VS 1</b>                         |



|                                       |                                 |
|---------------------------------------|---------------------------------|
| <b>ADDITIONAL GRADING INFORMATION</b> |                                 |
| Polish                                | <b>EXCELLENT</b>                |
| Symmetry                              | <b>EXCELLENT</b>                |
| Fluorescence                          | <b>NONE</b>                     |
| Inscription(s)                        | <b>LABGROWN IGI LG523272231</b> |

Comments: This Laboratory Grown Diamond was created by Chemical Vapor Deposition (CVD) growth process and may include post-growth treatment.  
Type IIa

|                |                            |   |   |
|----------------|----------------------------|---|---|
| April 11, 2022 | IGI Report No. LG523272231 | 2.10 CARATS   | E |
|                | SQUARE CUSHION BRILLIANT   |   |   |
|                | 7.58 X 7.54 X 4.72 MM      |   |   |
|                | Carat Weight               |   |   |
|                | Color Grade                |   |   |
|                | Clarity Grade              |   |   |
|                | Depth                      | 62.6%   |   |
|                | Table                      | 67%   |   |
|                | Girdle                     | Medium To Slightly Thick (Faceted)  |   |
|                | Culet                      | Pointed   |   |
|                | Polish                     | EXCELLENT   |   |
|                | Symmetry                   | EXCELLENT   |   |
|                | Fluorescence               | NONE  |   |
|                | Inscription(s)             | LABGROWN IGI LG523272231  |   |
|                | Comments:                  | This Laboratory Grown Diamond was created by Chemical Vapor Deposition (CVD) growth process and may include post-growth treatment. Type IIa |   |

