



ELECTRONIC COPY

LABORATORY GROWN DIAMOND REPORT

April 26, 2022
IGI Report Number LG524213372
Description LABORATORY GROWN DIAMOND
Shape and Cutting Style ROUND BRILLIANT
Measurements 7.64 - 7.68 X 4.72 MM

GRADING RESULTS

Carat Weight 1.71 CARAT
Color Grade J
Clarity Grade SI 1
Cut Grade IDEAL

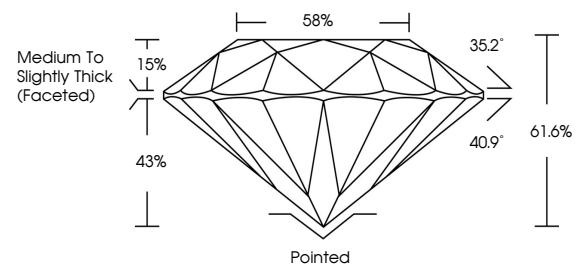
ADDITIONAL GRADING INFORMATION

Polish EXCELLENT
Symmetry EXCELLENT
Fluorescence NONE
Inscription(s) LABGROWN IGI LG524213372

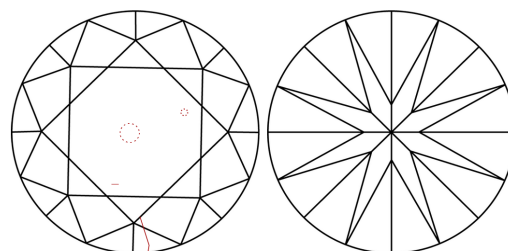
Comments: This Laboratory Grown Diamond was created by Chemical Vapor Deposition (CVD) growth process and may include post-growth treatment. Type IIa

LG524213372

PROPORTIONS



CLARITY CHARACTERISTICS



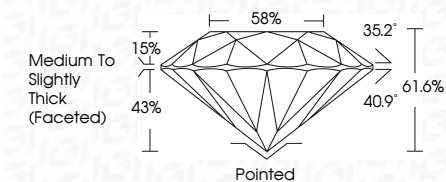
KEY TO SYMBOLS

Red symbols indicate internal characteristics.
Green symbols indicate external characteristics.

GRADING SCALES

Table showing color grading scales (CL, NC, FT, VLT, LT) and clarity (10x) grading scales (FL, IF, VVS, VS, SI, I).

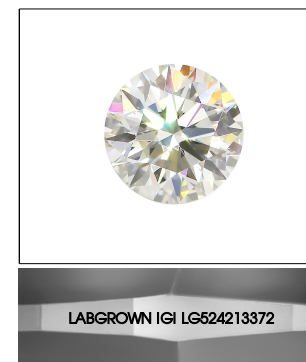
April 26, 2022
IGI Report Number LG524213372
Description LABORATORY GROWN DIAMOND
Shape and Cutting Style ROUND BRILLIANT
Measurements 7.64 - 7.68 X 4.72 MM
GRADING RESULTS
Carat Weight 1.71 CARAT
Color Grade J
Clarity Grade SI 1
Cut Grade IDEAL



ADDITIONAL GRADING INFORMATION

Polish EXCELLENT
Symmetry EXCELLENT
Fluorescence NONE
Inscription(s) LABGROWN IGI LG524213372

Comments: This Laboratory Grown Diamond was created by Chemical Vapor Deposition (CVD) growth process and may include post-growth treatment. Type IIa



LABGROWN IGI LG524213372

LASERSCRIBE SM

Sample Image Used



IGI

April 26, 2022
IGI Report No. LG524213372
ROUND BRILLIANT
7.64 - 7.68 X 4.72 MM
Carat Weight 1.71 CARAT
Color Grade J
Clarity Grade SI 1
Cut Grade IDEAL
Depth 61.05%
Table 58%
Grade Medium to Slightly Thick (Faceted)
Culet Pointed
Polish EXCELLENT
Symmetry EXCELLENT
Fluorescence NONE
Inscription(s) LABGROWN IGI LG524213372
Comments: This Laboratory Grown Diamond was created by Chemical Vapor Deposition (CVD) growth process and may include post-growth treatment. Type IIa