



ELECTRONIC COPY

LABORATORY GROWN DIAMOND REPORT

June 9, 2022
IGI Report Number LG532243383
Description LABORATORY GROWN DIAMOND
Shape and Cutting Style ROUND BRILLIANT
Measurements 8.20 - 8.22 X 5.07 MM

GRADING RESULTS

Carat Weight 2.08 CARATS
Color Grade G
Clarity Grade VS 1
Cut Grade EXCELLENT

ADDITIONAL GRADING INFORMATION

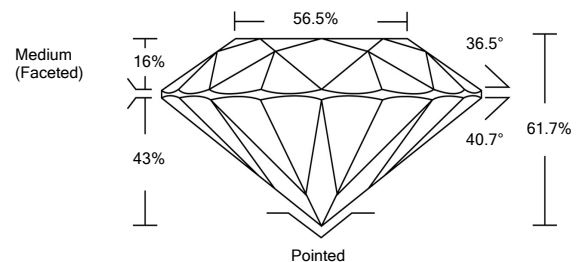
Polish VERY GOOD
Symmetry EXCELLENT
Fluorescence NONE

Inscription(s) LABGROWN IGI LG532243383

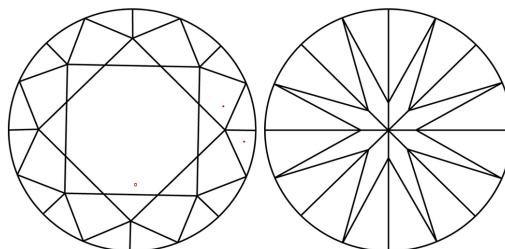
Comments: This Laboratory Grown Diamond was created by Chemical Vapor Deposition (CVD) growth process and may include post-growth treatment. Type IIa

LG532243383

PROPORTIONS



CLARITY CHARACTERISTICS



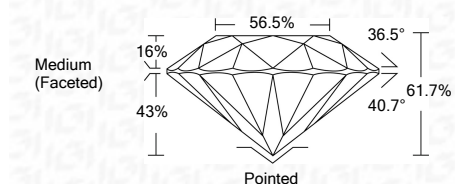
KEY TO SYMBOLS

Red symbols indicate internal characteristics.
Green symbols indicate external characteristics.

June 9, 2022
IGI Report Number LG532243383
Description LABORATORY GROWN DIAMOND
Shape and Cutting Style ROUND BRILLIANT
Measurements 8.20 - 8.22 X 5.07 MM

GRADING RESULTS

Carat Weight 2.08 CARATS
Color Grade G
Clarity Grade VS 1
Cut Grade EXCELLENT



ADDITIONAL GRADING INFORMATION

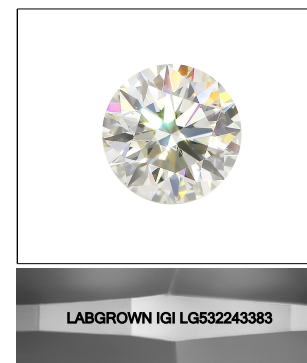
Polish VERY GOOD
Symmetry EXCELLENT
Fluorescence NONE

Inscription(s) LABGROWN IGI LG532243383

Comments: This Laboratory Grown Diamond was created by Chemical Vapor Deposition (CVD) growth process and may include post-growth treatment. Type IIa

GRADING SCALES

Table with 2 rows and 5 columns. Row 1: COLOR GRADING SCALE (CL, NC, FT, VLT, LT) with corresponding color descriptions. Row 2: CLARITY (10x) GRADING SCALE (FL, IF, VVS, VS, SI, I) with corresponding clarity descriptions.



LASERSCRIBE SM
Sample Image Used



IGI

June 9, 2022
IGI Report No. LG532243383
ROUND BRILLIANT
8.20 - 8.22 X 5.07 MM
Carat Weight 2.08 CARATS
Color Grade G
Clarity Grade VS 1
Cut Grade EXCELLENT
Depth 61.7%
Table 16.5%
Girdle Medium (Faceted)
Culet Pointed
Polish VERY GOOD
Symmetry EXCELLENT
Fluorescence NONE
Inscription(s) LABGROWN IGI LG532243383
Comments: This Laboratory Grown Diamond was created by Chemical Vapor Deposition (CVD) growth process and may include post-growth treatment. Type IIa